

2021



Mounts Bay Sailing Club

WINDSURFER

WA SPRING CHAMPIONSHIPS

Friday 15th and Sunday 17th October 2021

Mounts Bay Sailing Club, Australia II Drive Crawley

Organising Authority: Mounts Bay Sailing Club (Inc.) (MBSC)

The event is run by the Organising Authority with the assistance of the Windsurfer Class Association of Western Australia Inc. (WCAWA).

SAILING INSTRUCTIONS

MBSC, in association with WCAWA, welcomes Windsurfer Class sailors participating in the 2021 WA Windsurfer Class Spring Championships and their families, friends, supporters and sponsors.

1. RULES

- 1.1. The regatta will be governed by the rules as defined in the Racing Rules of Sailing Windsurfing Edition – RRS(WE) 2021 – 2024 which can be found at <https://www.sailing.org/87179.php> ; except where they are changed by the Notice of Race (NOR) or by the Sailing Instructions (SIs). In the event of a conflict, the SIs will prevail.
- 1.2. The Windsurfer Class (IWCA) rules will apply except as amended by these SI's

2. NOTICES TO COMPETITORS

Notices to competitors will be posted on the official race notice board located on the lower level of the clubhouse at Mounts Bay Sailing Club.



3. CHANGES TO SAILING INSTRUCTIONS

Any change to the sailing instructions will be posted at least 45 minutes before the scheduled start time of first race of the day it will take effect on the official notice board.

4. SIGNALS MADE ASHORE

- 4.1. Signals made ashore will be displayed on the club flagpole at Mounts Bay Sailing Club.
- 4.2. When flag AP is displayed ashore '1 minute' is replaced with 'not less than 30 minutes' in the race signal AP instruction.
- 4.3. When Code Flag 'Q' is displayed ashore, no boards are permitted to leave the shore.

5. SCHEDULE OF EVENTS

5.1. The competition schedule will be in accordance with the following, as well as notices to competitors:

Day/Date	Event	Time	Location
Friday 15/10/21	Registration	1500	MBSC Kilburn Hall
Friday 15/10/21	Competitor Briefing	1600	Matilda Deck
Friday 15/10/21	Race Session – First warning not before:	1630	MB/MWE
Friday 15/10/21	Galley Meal (included in entry fee)	1800	Matilda Deck
Sunday 17/10/21	Food available for purchase from the canteen	0900 - 1400	Matilda Deck
Sunday 17/10/21	Morning Briefing	0930	
Sunday 17/10/21	Race Session – First warning not before:	1000	MB/MWE
Sunday 17/10/21	Afternoon Briefing	1300	Matilda Deck
Sunday 17/10/21	Race Session – Marathon -First Warning not before	1400	MB/MWE
Sunday 17/10/21	Presentations	1800	MBSC Upstairs Bar & Balcony
Sunday 17/10/21	Pizza and drinks at the bar (food included in entry fee)	1815	MBSC Upstairs Bar & Balcony

The schedule is indicative only and may be changed at any time to accommodate any logistical or weather issues or as the Race Officers or Organising Authority otherwise deem fit.

The event will be run on an 'on call' basis.

Competitors will be briefed before each race session as to what discipline will be run.

Decisions will be made the Organising Authority based on conditions, safety and requirements to complete the racing.



6. CLASS FLAG

6.1 The class flag will be square, with a black Windsurfer symbol on a pink background.

7. RACING AREA

7.1 The competition area will be Matilda Bay. See Attachment 2

8. COURSES

8.1. The diagrams in Attachment 1 show the course for course racing.

8.2. The Marathon will be as per MBSC club courses as shown in Attachment 3

8.3. All divisions will race on the same course and race in one fleet.

8.4. Course racing sessions may consist of multiple races back-to-back.

8.5. A maximum of six (6) Course Races and one (1) Marathon will be conducted.

9. MARKS

9.1. Course Racing Course

- Mark A will be a large red pimple buoy.
- Gate marks will be red pimple buoys.
- The starting marks will be a flagstaff displaying an orange flag on the Race Committee Boat at the starboard end and a mark with an orange flag (Pin)
- The Course Racing finishing marks will be a blue flag on the Race Committee boat and a mark with a blue flag to Starboard of the Committee Boat
- A clearance buoy may be streamed from the stern of the Race Committee start boat. Boards shall not pass between this buoy and the Race Committee start boat at any time.
- Marks for the Marathon are described in Attachment 3

10. THE START

10.1. Course Races

- Course races will be started by using RRS(WE)26 and is amended as follows:

<i>Minutes relative to starting signal</i>	<i>Flag Signal</i>	<i>Sound Signal</i>	<i>Means</i>
- 3	Class Flag and Numeral flags	One	Warning signal
- 2	Code Flag P, U, Black flag	One	Preparatory signal
- 1	Preparatory flag removed	One	One minute
0	Class Flag and Numeral Flags removed	One long	Starting Signal
+ 30 Seconds		One	Cease Pumping



- A board starting later than 5 minutes after her starting signal will be scored 'Did Not Start'.
- The warning signal for each succeeding division shall be made with or after the starting signal of the preceding division.
- Boards whose warning signal has not been made shall avoid the starting area during the starting sequence for other races.

11. CHANGE OF THE NEXT LEG OF THE COURSE

- 11.1. To change the next leg of the course, the race committee will lay a new mark (or move the finishing mark) and remove the original mark as soon as practicable. When in a subsequent change a new mark is replaced, it will be replaced by an original mark.
- 11.2. Except at a gate, boards shall pass between the boat signaling the change of the next leg and the nearby mark, leaving the mark to port and the race committee boat to starboard. This changes rule 28.1.

12. PROPULSION

- 12.1. As amended by the IWCA Class Rules:

C1.1 RULES

- (b) RRS (WE) 42 is amended to read:

A board shall be propelled only by the action of the wind on the sail, by the action of the water on the hull and by the unassisted actions of the competitor except that when:

- (i) Course racing

And competitors are sailing to windward or on a close-hauled course, pumping (continuous and/or repetitive movement of the rig to induce wind-flow over the sail) is prohibited except for the first 30 seconds after the starting signal.

- 12.2. Any race committee boats stationed on course will observe for infractions of 13.1. Sailors who infringe may be subject to protest by the race committee.
- 12.3. Pumping is unrestricted in the Marathon event.

13. PENALTIES

- 14.1 RRS (WE) 44.1 applies – a 360 Degree Turn Penalty.

14. TIME LIMIT COURSE RACING

- 14.1. The target time for the first board to complete the full course will be 25 minutes.
- 14.2. The time limit for the first board to complete the full course will be 40 minutes. If no board has finished within 40 minutes of the start of that race, the race will be abandoned.
- 14.3. Boards failing to finish within 15 minutes after the first board in their start group finishes the full course will be scored Did Not Finish without a hearing. This changes rules 35, A4, and A5.

15. PROTESTS AND REQUESTS FOR REDRESS

15.1. Course Races

- 15.1.1. Competitors intending to protest shall inform the finish boat as soon as practicable after finishing.
- 15.1.2. Protest forms will be available from the Regatta Office. Protests and requests for redress or reopening shall be delivered to the shore race officer within the appropriate time limit.



- 15.1.3. The protest time limit is 10 minutes after the last board has finished the last race of the day or the race committee signals no more racing today, whichever is later.
- 15.1.4. Notices will be posted no later than 10 minutes after the protest time limit to inform competitors of hearings in which they are parties or named as witnesses. Hearings will be held in the race office beginning at the time posted.
- 15.1.5. Notices of protests by the race committee will be posted to inform competitors under RRS(WE) 61.1(b).
- 15.1.6. Breaches of SI 20, 21 and 23 will not be grounds for protest by a board. This changes RRS(WE) 60.1(a). Penalties for these breaches may be less than disqualification if the Protest Committee so decides. The scoring abbreviation for a discretionary penalty imposed under this Instruction will be 'DP'.
- 15.1.7. On the last scheduled day of racing a request for reopening a hearing shall be delivered;
 - a) within the protest time limit if the requesting party was informed of the decision on the previous day;
 - b) no later than 10 minutes after the requesting party was informed of the decision on that day. This changes RRS(WE) 66.

16. ARBITRATION

- 16.1. RRS Appendix T Arbitration will be used, see Attachment 3.

17. SCORING

- 17.1. Course Racing and Marathon: RRS Appendix A – 'Low Point System' will apply for course racing and the marathon event.
- 17.2. The Marathon will be scored as a single Course Race
- 17.3. Each board will be awarded points for each race based on her finishing place within her division. Divisions are defined in the Notice of Race and in the SIs.
- 17.4. Three course races are required to be completed to constitute a series.
- 17.5. When fewer than 6 course races have been completed, a board's series course racing score will be the total of her race scores.
- 17.6. When 6 course races have been completed, a board's series course racing score will be the total of her race scores excluding her worst score ("one drop").
- 17.7. This changes RRS (EW) Appendix A A2.1 and A2.2.

18. SAFETY REGULATIONS

- 18.1. For each Course race or Course race session each board intending to race shall personally sign-on in the designated area of Mounts Bay Sailing Club prior to the warning signal of the race or race session, and shall personally sign-off as soon as practicable upon returning to shore, but no later than the end of protest time for that day.

Failure to comply with this Instruction will result in a board being penalised with a scoring penalty of 5 places in her division in the race or the first race of that race session by the Race Committee. This changes Rule 63.1 and A4.1.
- 18.2. All competitors shall wear whilst competing, personal flotation devices which are in good condition and in accordance with the specifications issued or approved by Australian Sailing. Attention is drawn to Fundamental Rule 1.2.
- 18.3. A competitor that retires from a race shall notify the Race Committee before leaving the racing area, or if that is not possible, shall notify the race office as soon as possible after returning ashore and before the end of the protest time limit.

19. EQUIPMENT AND MEASUREMENT CHECKS



- 19.1. A board or equipment may be inspected at any time for compliance with the class rules and Sailing Instructions. On the water, a board can be instructed by a Race Committee equipment inspector or measurer to proceed immediately to a designated area for inspection.
- 19.2. Substitution of equipment will not be allowed unless authorised by the Race Committee. Requests for substitution shall be made to the Committee at the first reasonable opportunity.
- 19.3. Competitors shall not wear or carry clothing or equipment for the purpose of increasing their weight. However, a competitor may wear a drinking container that shall have a capacity of at least one litre and weigh no more than 1.5 kilograms when full.

20. SUPPORT BOATS

- 20.1. Team leaders, coaches and other support personnel shall stay outside areas where boards are racing from the time of the preparatory signal for the first division/s to start until all boards have finished or retired or the Race Committee signals a postponement, general recall or abandonment.
- 20.2. During any start sequence support boats shall stay at least 50 metres below the starting line and its extensions.

21. BASIC PRINCIPLES

- 21.1. Environmental Responsibility - participants are encouraged to minimize any adverse environmental impact for the event.
- 21.2. Sailors shall not put rubbish in the water. Rubbish may be placed aboard support and race committee boats.

22. ELECTRONIC COMMUNICATION

- 22.1. Radio: except in an emergency, a board shall neither make radio transmissions while racing nor receive radio communications not available to all boards. This restriction also applies to mobile phones.
- 22.2. Tracking equipment: during the marathon only, competitors may carry a mobile phone or GPS device. This allows for a competitor to use a GPS-based application, or similar, in order for a remotely located guest to follow their on-water progress.

23. RACE RESULTS

Race results will be posted on the official notice board when available. Results may also be published online at: <https://mbsc.com.au/sailing-results/>

24. PRIZES

- 24.1. Prizes will be awarded at the discretion of the Organising Authority.

25. DISCLAIMER OF LIABILITY

- 25.1. Competitors who participate in competition at Mounts Bay Sailing Club do so entirely at their own risk and responsibility. Attention is drawn to Fundamental Rule 3 Decision to Race, which states "The responsibility for a board's decision to participate in a race or to continue racing is hers alone".
- 25.2. Mounts Bay Sailing Club and the Windsurfer Class Association of Western Australia Inc. and each of their respective officers, officials, members, servants, volunteers and agents accept no liability with respect of loss of life, personal injury or loss or damage to property which may be sustained by reason of competitors' participation or intended participation in the event or howsoever arising in connection with the event.
- 25.3. ENTRY DISCLAIMER

It is the competitor's sole decision to enter this event and to start and or to continue to compete. By way of entering, competitors acknowledge and agree that participation in this event can be dangerous and accept that their participation is at their exclusive risk in every respect. In addition, by way of entering competitors shall hold harmless the Organising Authority, its officers, members, servants and agents and all other competitors in respect of all liability for injury to their person and or loss or



damage to their property howsoever arising from their participation or intended participation in this event and acknowledge and accept that the organizing authority, its officers, members, servants, agents and other competitors accept no responsibility in respect to loss of life, personal injury or loss or damage to property which may be sustained by reason of a competitor's participation or intended participation in this event or arising for whatever reason in connection with this event.

- 25.4. All competitors will be required to sign an entry form at registration that includes an entry disclaimer.
- 25.5. By way of entering, competitors also agree to compete in a spirit of good sportsmanship, which promotes safe, fair and inclusive sport.

26. INSURANCE

- 26.1. Every competitor shall be a member of the Windsurfer Class Association of Australia (WCAA).
- 26.2. Every competitor shall have valid public liability insurance through an approved Australian Windsurfing Association (AWA) affiliated member organisation.
- 26.3. Every competitor who enters the Championship is deemed to have confirmed that they have such insurance. Competitors found not to have such insurance shall have their entry revoked.
[Refs.http://www.windsurfing.org/insurance.htm](http://www.windsurfing.org/insurance.htm)

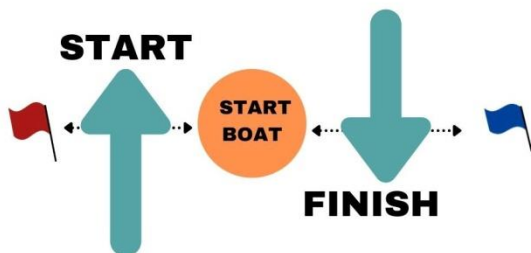
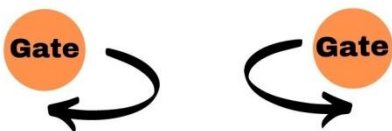
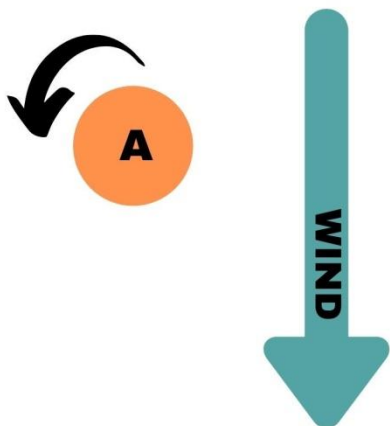


ATTACHMENT 1 – COURSE DIAGRAMS

COURSE RACING DIAGRAM: The following diagram describes the course, the order in which the marks are to be passed and the side on which each mark is to be left. Course Number to be displayed on the Course Board at the stern of the Committee Boat.

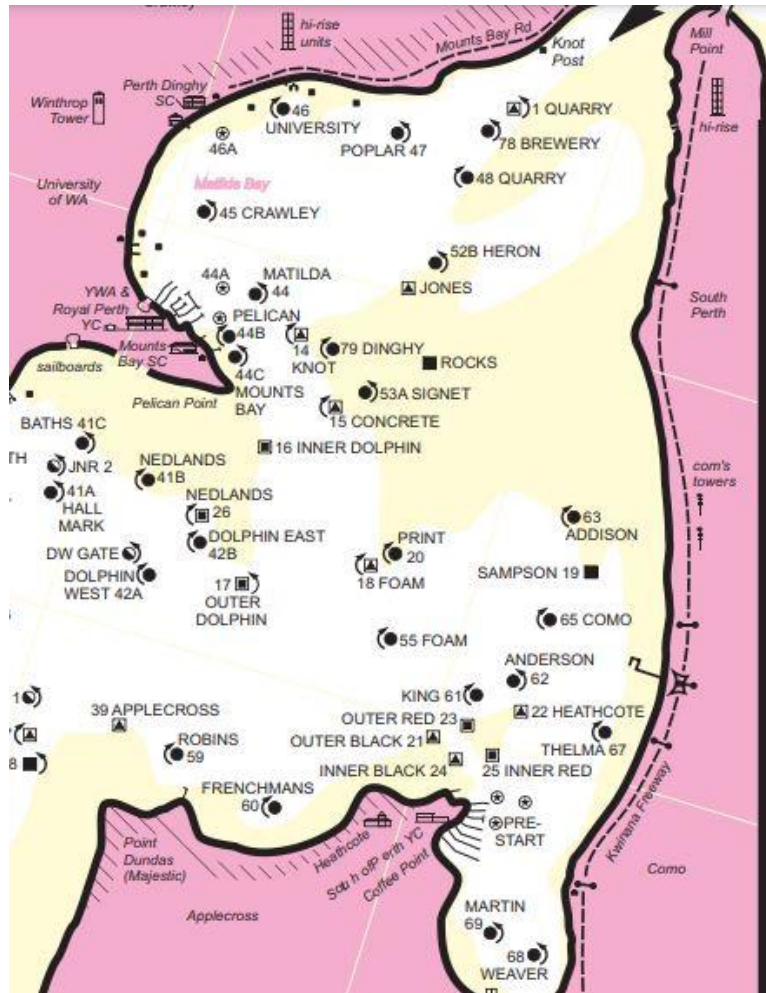
COURSE RACING DIAGRAM

Course 1  (Windward - Leeward): Start Boat, A, Gate, A, Finish



ATTACHMENT 2

SAILING AREA MAP



Windsurfer LT

COURSES 2021/22

MOUNTS BAY SAILING CLUB

1. South Westerly

Green and White Flag

Start in the vicinity of QUARRY Buoy

CLUB Buoy	44C	Port
ADDISON Buoy	63	Starboard
ROBINS Buoy	59	Starboard
ADDISON Buoy **	63	Starboard
ROBINS Buoy **	59	Starboard
PELICAN Buoy	44B	Starboard
QUARRY Buoy	48	Starboard
MATILDA Buoy	44	Port
FINISH Through CLUB LINE		Port
FINISH BUOY to PORT		

3 Westerly

Code Flag "Q" (Yellow)

Start in the Vicinity of ADDISON

PELICAN	44B	Starboard
UNIVERSITY	46	Starboard
QUARRY	48	Starboard
UNIVERSITY	46	Starboard
QUARRY	63	Starboard
UNIVERSITY**	46	Starboard
QUARRY**	48	Starboard
MATILDA Buoy	44	Port
FINISH Through CLUB LINE		Port
FINISH BUOY to PORT		

5. Easterly

Code Flag "E" (Blue over Red)

Start in the vicinity of Pelican Point

ADDISON Buoy	63	Starboard
FOAM	55	Starboard
PELICAN	44B	Starboard
ADDISON Buoy	63	Starboard
PELICAN **	44B	Starboard
ADDISON Buoy **	63	Starboard
MATILDA	44	Port
FINISH Through CLUB LINE		Port
FINISH BUOY to PORT		

4.Southerly

Code Flag "E" (Red and White)

Start in the vicinity of QUARRY Buoy

MATILDA Buoy	44	Port
ADDISON Buoy	63	Starboard
ROBINS Buoy	59	Starboard
ADDISON Buoy	63	Starboard
FOAM**	55	Starboard
ROBINS Buoy	63	Starboard
QUARRY Buoy	48	Starboard
MATILDA Buoy	44	Port
FINISH Through CLUB LINE		Port
FINISH BUOY to PORT		

** Denotes shortened course. Round this mark and proceed to CLUB finish line leaving MATILDA Buoy (44) to Port.



ATTACHMENT 4 – ARBITRATION

Arbitration adds an extra step to the protest resolution process but can eliminate the need for some protest hearings, thus speeding up the process for events in which many protests are expected.

T1 POST-RACE PENALTIES

(a) Provided that rule 44.1(b) does not apply, a boat that may have broken one or more rules of Part 2 or rule 31 in an incident may take a Post-Race Penalty at any time after the race until the beginning of a protest hearing involving the incident.

(b) A Post-Race Penalty is a 30% Scoring Penalty calculated as stated in rule 44.3(c). However, rule 44.1(a) applies.

(c) A boat takes a Post-Race Penalty by delivering to the arbitrator or a member of the protest committee a written statement that she accepts the penalty and that identifies the race number and where and when the incident occurred.

T2 ARBITRATION MEETING

An arbitration meeting will be held prior to a protest hearing for each incident resulting in a protest by a boat involving one or more rules of Part 2 or rule 31, but only if each party is represented by a person who was on board at the time of the incident. No witnesses will be permitted.

However, if the arbitrator decides that rule 44.1(b) may apply or that arbitration is not appropriate, the meeting will not be held, and if a meeting is in progress, it will be closed.

T3 ARBITRATOR'S OPINION

Based on the evidence given by the representatives, the arbitrator will offer an opinion as to what the protest committee is likely to decide:

(a) the protest is invalid,

(b) no board will be penalized for breaking a rule, or

(c) one or more boards will be penalized for breaking a rule, identifying the boats and the penalties.

T4 ARBITRATION MEETING OUTCOMES

After the arbitrator offers an opinion,

(a) a board may take a Post-Race Penalty, and

(b) a board may ask to withdraw her protest. The arbitrator may then act on behalf of the protest committee in accordance with rule 63.1 to allow the withdrawal.

Unless all protests involving the incident are withdrawn, a protest hearing will be held.



